

DPR Kit Instructions

- Before handling or applying any product, read the **Safety Data Sheet**. Wear safety glasses and gloves while handling kits.

For best results:

Condition kits to $\geq 60^{\circ}\text{F}$ (15°C) before using.
Kits are designed for single use. Do not divide.

- 1 Prepare repair area:** Remove loose materials. Dry all moist areas and cracks. Wire brush surfaces to remove dust and dirt. Blow area and cracks clean with dry compressed air.
Caution: moisture will prevent bonding.
- 2** Use "eggbeater" style mixer with a drill capable of ≥ 400 RPM.
- 3 Open Kit**, remove packaged materials and set aside. Leave aggregate in bucket.

Tear open Part A package and pour into bucket with aggregate.
- 4 Mix for 2 minutes.** Scrape bucket sides and bottom with provided scraper.

Kit Options:
Black color: add black color pack to Part A + Aggregate & mix
Gray (standard) color: do not add black color pack
FastPatch® Kicker: Add Kicker to speed up cure time at colder temperatures
Gravel: Increase kit yield, add 1 gallon clean & dry 3/8" pea gravel
- 5 Tear open Part B package** and pour into bucket with mixture of Part A & aggregate. **Mix for an additional 2 minutes.** Scrape bucket sides and bottom with provided scraper.
- 6** Immediately after mixing, **pour the mixed material into repair area.** Material should be level to surrounding surface.
- 7 Natural or black topping sand** may be applied to match surrounding surface. Apply topping sand to refusal when material has started to cure, typically after **10 minutes**.

Curing: 1 hour at 75°F (25°C) or 2-3 hours for $50\text{--}65^{\circ}$ ($10\text{--}18^{\circ}\text{C}$)
Store DPR between $65\text{--}75^{\circ}\text{F}$ ($18\text{--}25^{\circ}\text{C}$) before use.
Use Kicker to speed cure in cooler temperatures (sold separately).
Recommend: 1 bottle of Kicker below 55°F (12°C)

Shelf life: 1 year for unopened container.

Kit contents



Part A
Part B
Black color
Aggregate
Topping sands
Gloves
Scraper
Instructions & SDS

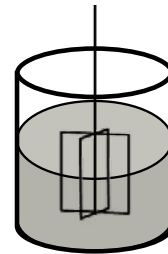
2



3



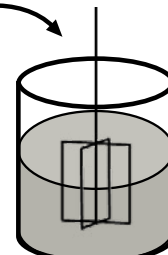
4



Mix Part A & aggregate for 2 minutes

Important!
Scrape sides & bottom while mixing

5



Add Part B & mix for 2 minutes

Important!
Scrape sides & bottom while mixing

6



Pour & level



Top with sand after 10 minutes

7